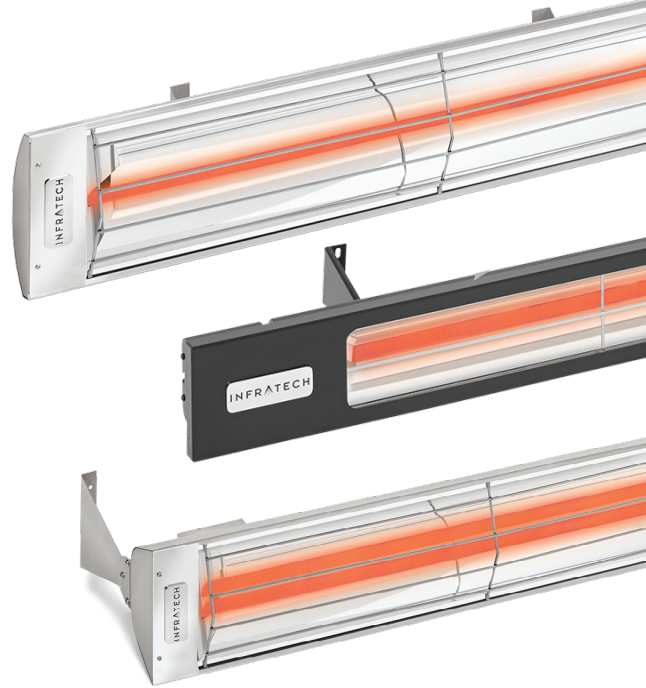


# Three EZ steps for Designing Your Infratech Heating System



**First, a little customer contact information. Thank you!**

Name: \_\_\_\_\_

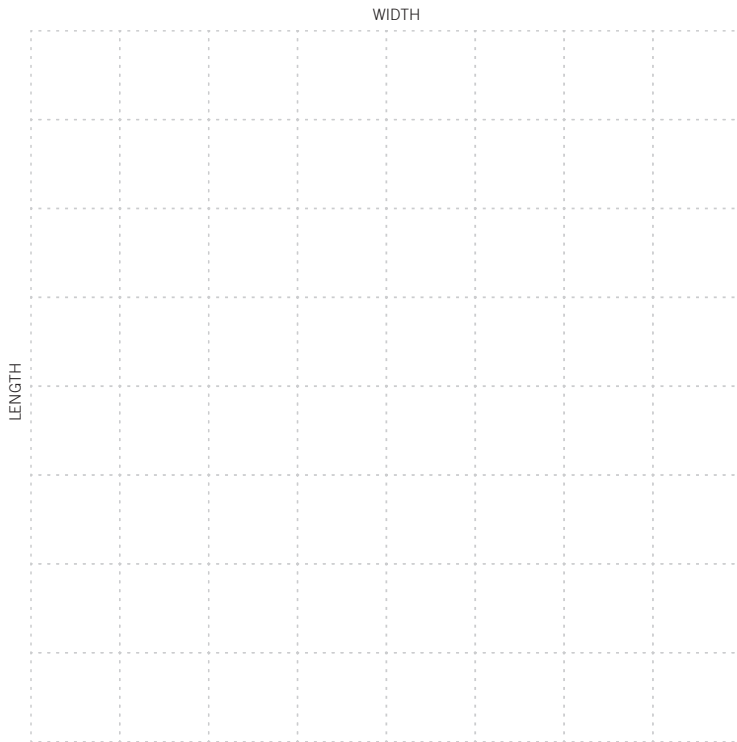
Address: \_\_\_\_\_

Phone: \_\_\_\_\_

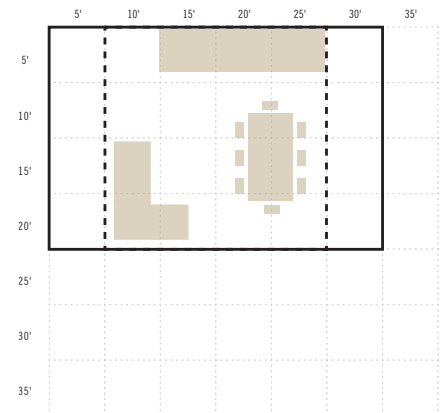
Email: \_\_\_\_\_

## 1 Measuring your space.

**A.** Using the graph below, draw a bird's eye view of the total dimensions of your space. Estimate size/distance by allowing approximately five feet per grid square. With a solid line, outline the dimensions of your space. Use a dotted line to indicate the area you would like to heat.



**EXAMPLE**



**B.** Total Space Length (feet) \_\_\_\_\_ x Total Space Width (feet) \_\_\_\_\_ Total Mounting Height (feet) \_\_\_\_\_

**C.** Describe what surface the heaters will be attached to (Pergola, Trellis, Wall, Ceiling, etc.)

\_\_\_\_\_

\_\_\_\_\_

**D.** Describe the environmental conditions that characterize your space (EG. Wind or Foggy, Enclosed on three sides, etc.)

\_\_\_\_\_

\_\_\_\_\_

**2 Next, choose the design styles which will best heat your space.**

**A.** How do you plan to mount the heaters? (Please refer to the top of pages 8-9 in the Product Book at [ezporch.com](http://ezporch.com) for mounting options)

- FLUSH MOUNT    CEILING MOUNT    WALL MOUNT    DROP POLE MOUNT

Warning: HEATERS CANNOT BE FLUSHED MOUNTED ON A SLOPED/PITCHED CEILING

**B.** What color do you prefer? (Please refer to page 21 in the Product Book at [ezporch.com](http://ezporch.com) for color options)

- STAINLESS STEEL

Custom Color (\$50 upcharge per unit)

- WHITE    ALMOND    BRONZE    BISCUIT    BEIGE    GREY    BLACK    COPPER

**SL-SERIES:**  BLACK    SILVER

**GARAGE HEATER (120v plug-in):**  BLACK

**3 Now, choose the control option that best supports the technical specifications of the heaters you've selected, and offers the functionality you desire.**

Infratech offers two levels of controls:

**Value Controls:** Our standard controls are ideal for basic functionality and limited budgets.

- Simple On/Off switches for single element
- Duplex Stack switches for dual elements
- INF Input Regulators for single element heaters

Simple On/Off Switch



**Custom Controls:** Get maximum functionality, convenience, and enjoyment from your heating system with Infratech custom controls. Choose from our versatile range of options to enjoy these features.

- Hands-free functionality via remote mobile device or Bluetooth voice activation
- Smart home integration
- True intensity from 0-100%
- The ability to set timers
- Zoning capabilities

Universal Slide Dimmer and Timer Option



Additional notes or comments:

---



---



---



---