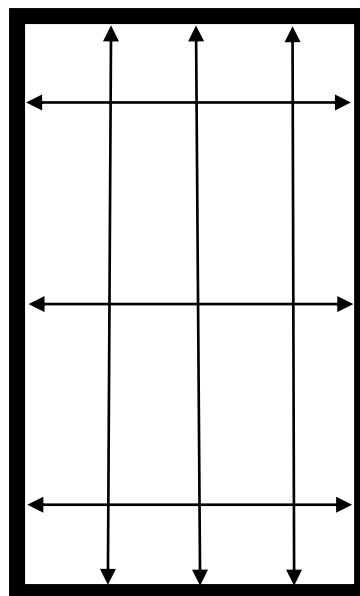
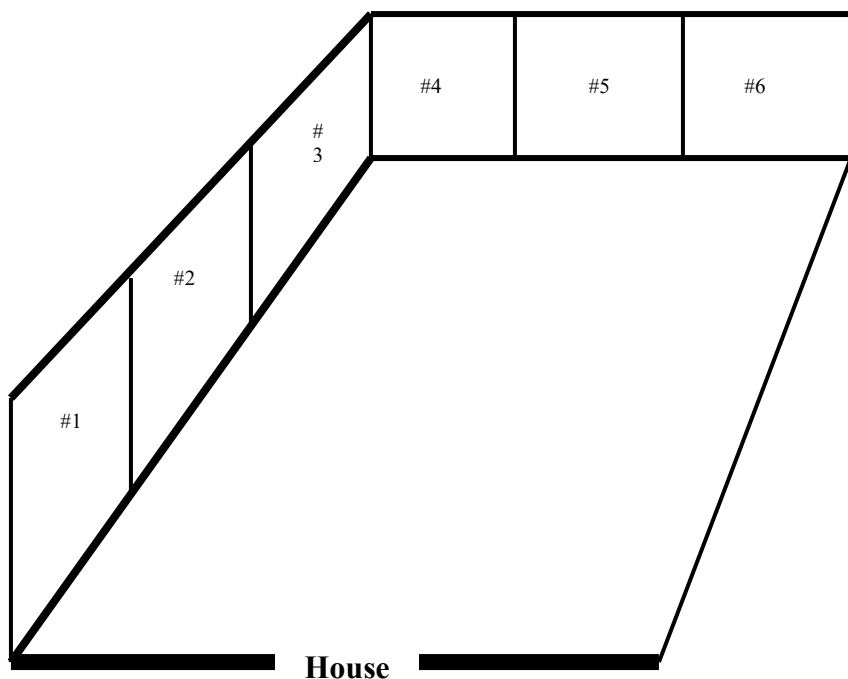


Amazing EZ-SCREEN[™] PORCH WINDOWS

A ROOM FOR 3 1/2 SEASONS

FREE QUOTE Directions For Measuring Your Porch



Opening

Here are some helpful tips to accurately measuring. You will need a tape measure and pencil. Stand inside your porch with your back to the house and sketch the layout of your porch. Number your openings with opening #1 to the left side of the house, continue numbering the openings clockwise. If needed include a door as a numbered opening. If you are sketching out a new porch layout – provide the total wall size.

Step 1: Measure in three locations vertically and three locations horizontally as shown above.

Step 2: Take the smallest of the three measurements you took vertically and the smallest of the three measurements you took horizontally. These two measurements will be your rough opening size.

Contact us with any
questions:

**Amazing EZ-Screen
Porch Windows**

**563 Shoreview Park Rd
Shoreview, MN 55126**

Office: 612-359-5800

Fax: 612-359-5801

**Email:
info@ezporch.com**

Amazing EZ-SCREENTM PORCH WINDOWS

A ROOM FOR 3 1/2 SEASONS

Thank you for your interest in our Amazing EZ-Screen Porch Windows. To receive your free quote, fill out this form and either mail or email it back to us. Create a simple sketch of your porch and number your openings. Fill out the measurement chart below according to your numbered opening.

Send to: info@ezporch.com

Questions: Call 612-359-5800

Customer _____

Street _____

City _____ State _____ Zip _____

Phone _____ - _____ - _____

Email _____

Frame Color: White ☐ Bronze ☐ Beige ☐

Black ☐ Pebble Khaki ☐

2026 Quote Request Form

Width

Height

1. _____ X _____

2. _____ X _____

3. _____ X _____

4. _____ X _____

5. _____ X _____

6. _____ X _____

7. _____ X _____

8. _____ X _____

9. _____ X _____

10. _____ X _____

11. _____ X _____

12. _____ X _____

